

## Special Instructions

How to Fill in the Answer Sheet and mark the response to Question in the Examination Hall.

1. You should write in the **Roll No.** on the Answer Sheet.
2. You should darken the answers in the Answer Sheet neatly and clearly with **Ball Point Pen** only.
3. Your response corresponding to various questions should be marked neatly and clearly as per the example below:

Supposing the following question is asked

1. Sun rises in which direction?

- A. West
- B. East
- C. South
- D. North

Now you will have 4 (four) alternative in the answer sheet for your response corresponding to the above Question.

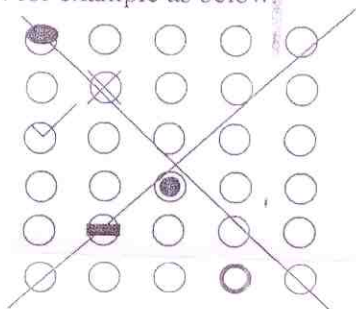
(A) (B) (C) (D)

In the above illustration if your chosen response is B i.e. East, then the same should be covered on the answer sheet by darkening the relevant circle with a **Ball Point Pen** only as below:

(A) (B) (C) (D)

#### 4. The Correct method of answering

- A) Four Alternative answers are suggested. You have to select the correct answer and indicate the same on answer sheet by darkening the relevant circle with **Ball Point Pen**
- B) You should give only one answer to each question.
- C) In following cases the answer will be treated as invalid.
  - Darkening of more than one circle
  - Use of other method like tick mark, cross mark, dots mark, outside circle, half filled circle etc. for example as below:



#### Note:

Please read the above special instructions carefully for darkening the relevant circle for correct Answer with **Ball Point Pen** and may be followed strictly.